

## HE 35 W/60

Colored T5 HE | Tubular fluorescent lamps 16 mm, high efficiency, colored, with G5 base



### Areas of application

- Shops
- Supermarkets and department stores
- Public buildings
- Decorative lighting

### Product benefits

- Ideal for cost-effective creative illumination and decoration
- Uniform distribution of light over the entire length of the lamp
- Suitable for color mixes, including with white light (2,700...6,500 K)

### Product features

- High color saturation of blue
- Average lifetime: up to 24,000 h (with QUICKTRONIC ECG)
- Dimmable



# Product datasheet

## Technical data

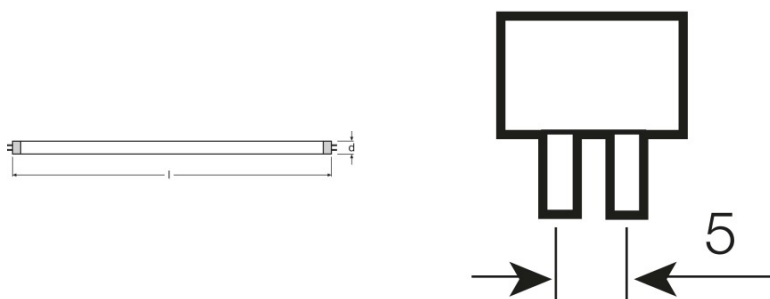
### Electrical data

Nominal wattage	35.00 W
Rated lamp efficacy (HF data 25 °C)	75 lm/W
Rated wattage	35.50 W
Rated luminous flux	2650 lm

### Photometrical data

Luminous flux at 25 °C	2650 lm
Luminous flux at 35 °C	2800 lm
Light color	60
Nominal luminous flux	2650 lm
Light color (designation)	Red
Rated LLMF at 2,000 h	0.95
Rated LLMF at 4,000 h	0.93
Rated LLMF at 6,000 h	0.92
Rated LLMF at 8,000 h	0.90
Rated LLMF at 12,000 h	0.90
Rated LLMF at 16,000 h	0.90
Rated LLMF at 20,000 h	0.89

### Dimensions & weight



Tube diameter	16 mm
Length	1449 mm
Length with base excl. base pins/connection	1449.00 mm
Diameter	16.0 mm
Maximum diameter	16.0 mm

# Product datasheet

## Temperatures & operating conditions

Rated ambient temp.w.max.luminous flux	35.0 °C
--	---------

## Lifespan

Service life	19000 h <sup>1)</sup>
Lifespan	24000 h <sup>1)</sup>
Rated lamp survival factor at 2,000 h	0.99
Rated lamp survival factor at 4,000 h	0.99
Rated lamp survival factor at 6,000 h	0.99
Rated lamp survival factor at 8,000 h	0.99
Rated lamp survival factor at 12,000 h	0.99
Rated lamp survival factor at 16,000 h	0.97
Rated lamp survival factor at 20,000 h	0.85
Operation mode LLMF/LSF	HF
Rated lamp life time	24000 h
Nominal lamp life time	24000 h

<sup>1)</sup> With preheat ECG

## Additional product data

Base (standard designation)	G5
Lamp mercury content	1.9 mg
Appropriate disposal acc. to WEEE	Yes
Product remark	Suitable for ECG operation only/Lamp designed for internal luminaire temperatures of 30...40 °C; optimum luminous flux achieved at 35 °C

## Capabilities

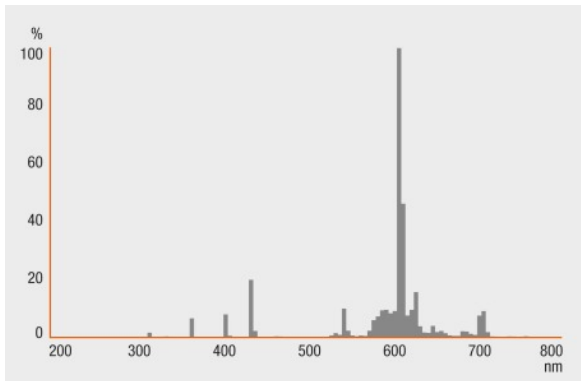
Suitable for indoor	Yes
---------------------	-----

## Certificates & standards

Energy efficiency class	A
Energy consumption	40 kWh/1000h

## Light Distribution

---



Spectral power distribution

---

### System guarantee

OSRAM System+ Guarantee in combination with OSRAM ECGs

---

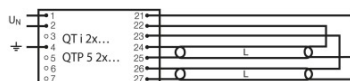
### Safety advice

In case of lamp breakage: [www.osram.com/brokenlamp](http://www.osram.com/brokenlamp)

## Product datasheet



Circuit diagram



Circuit diagram

### Logistical Data

Product code	Product description	Packaging unit (Pieces/Unit)	Dimensions (length x width x height)	Volume	Gross weight
4008321133458	HE 35 W/60	Shipping carton box 10	1482 mm x 42 mm x 104 mm	6.47 dm <sup>3</sup>	1798.00 g

The mentioned product code describes the smallest quantity unit which can be ordered. One shipping unit can contain one or more single products. When placing an order, for the quantity please enter single or multiples of a shipping unit.

### References / Links

For more information on the system guarantee and the terms and conditions of the guarantee visit

- ▶ [www.osram.com/system-guarantee](http://www.osram.com/system-guarantee)

For more information on QUICKTRONIC electronic control gear go to

- ▶ [www.osram.com/QUICKTRONIC](http://www.osram.com/QUICKTRONIC)

### Disclaimer

Subject to change without notice. Errors and omission excepted. Always make sure to use the most recent release.